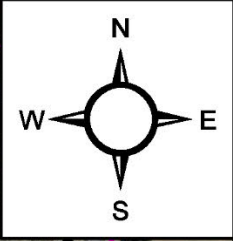


**METROPOLITAN
UTILITIES DISTRICT**

WP2009

UPDATE 8/30/2024

CONTRACTOR



48th St Sahler to Pratt
Main installation, service work and restoration remain.

50th St Ruggles to Spaulding
Main installation completed.
There is no service work in this area.
Restoration remains.

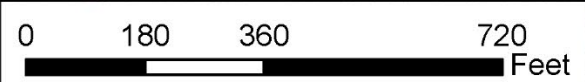
50th St Spaulding to Manderson
Main installation completed.
Service work and restoration remain.

52nd and Spaulding Intersection
Work in this intersection will require an intersection closure. Start date TBD. See next page for more information.

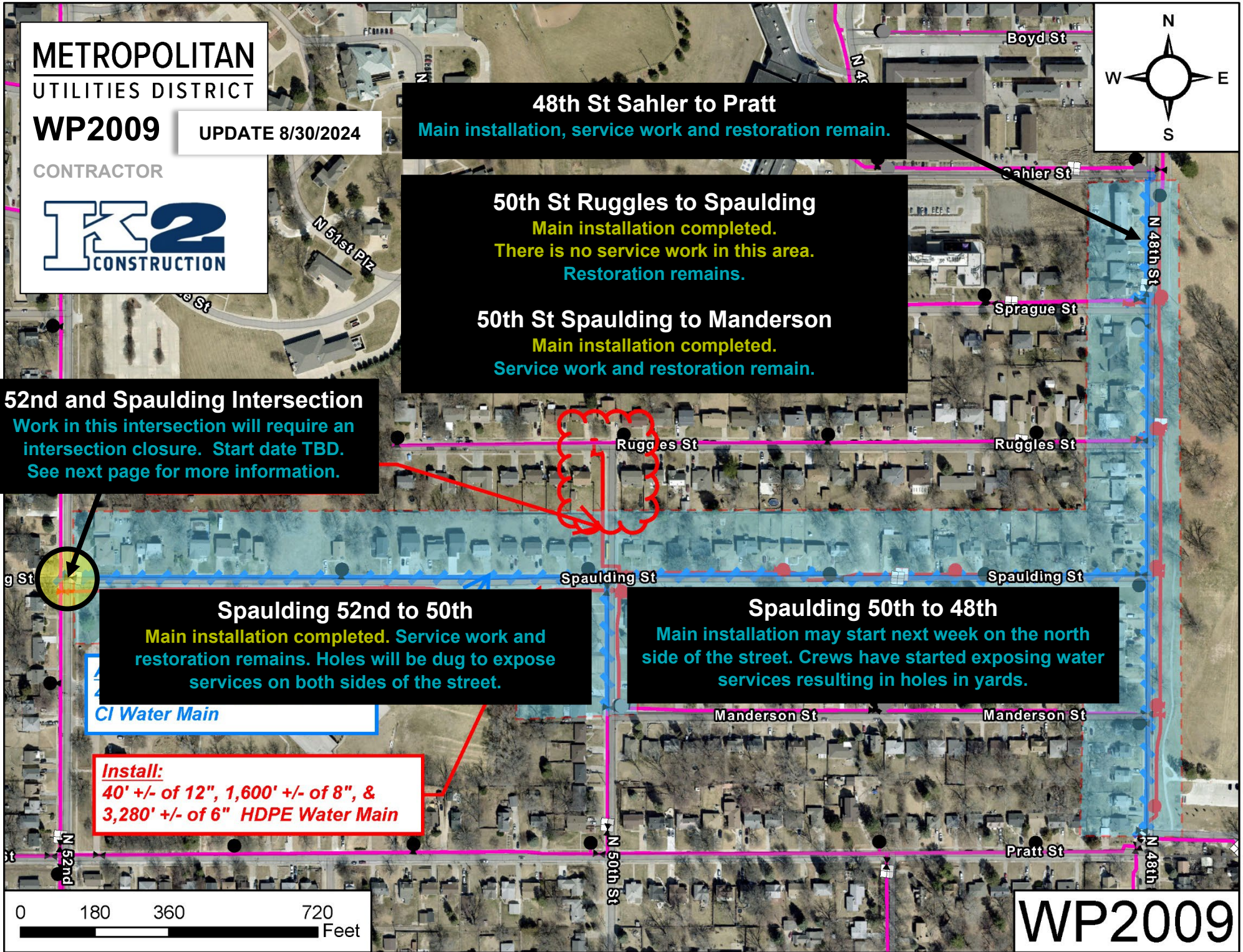
Spaulding 52nd to 50th
Main installation completed. Service work and restoration remains. Holes will be dug to expose services on both sides of the street.

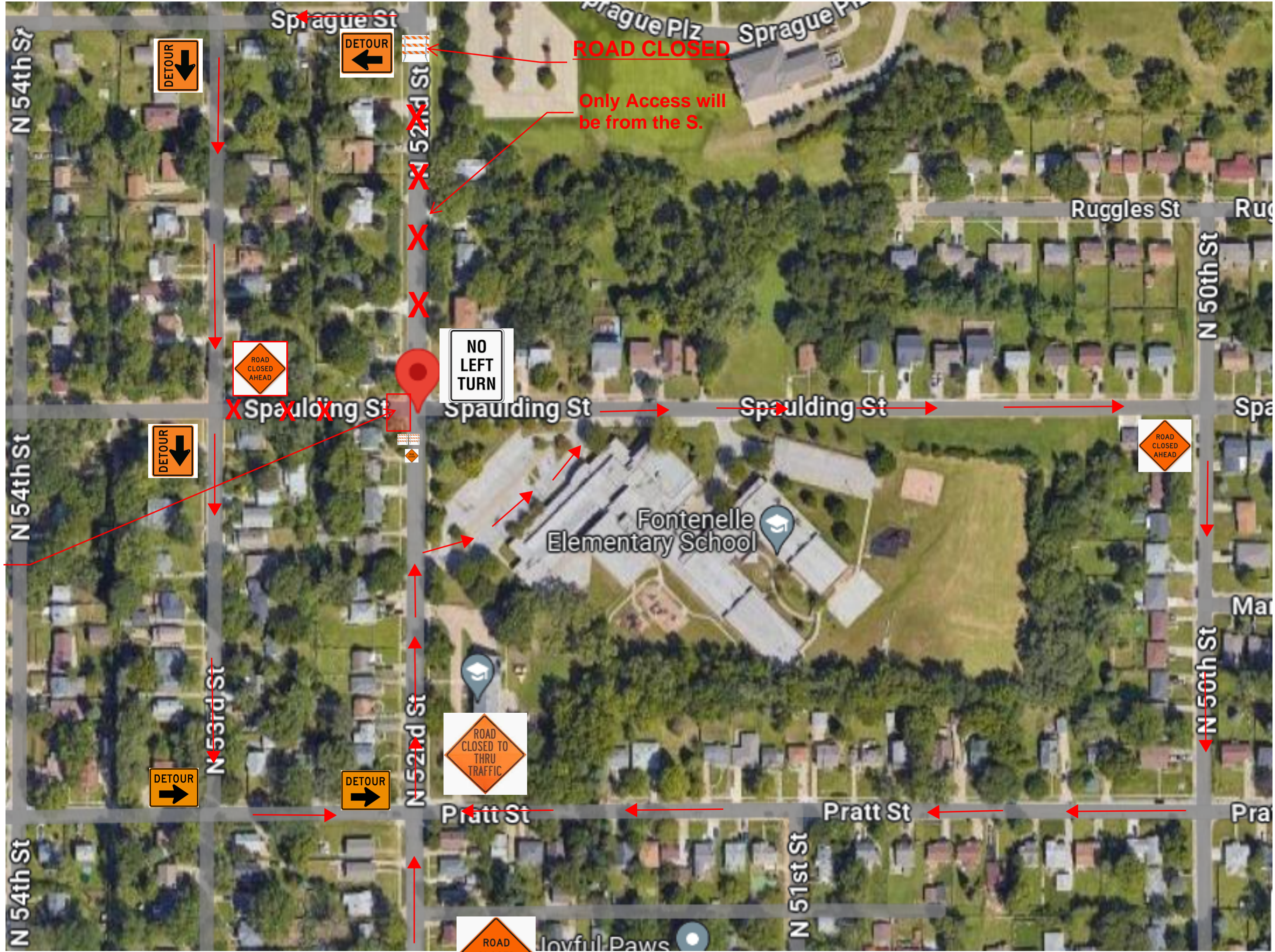
Spaulding 50th to 48th
Main installation may start next week on the north side of the street. Crews have started exposing water services resulting in holes in yards.

Install:
40' +/- of 12", 1,600' +/- of 8", & 3,280' +/- of 6" HDPE Water Main



WP2009





ROAD CLOSED

Only Access will be from the S.



Close with Concrete Barriers

July 2024

Si desea más información
acerca este proyecto en
español, por favor llame al
402.554.6666



WATER INFRASTRUCTURE REPLACEMENT

This project may require the replacement of your water service line and meter to your home or business, all at no cost to you.

PROJECT TIMELINE

1

LOCATE UTILITIES

A technician from M.U.D. will be marking utilities with flags and/or paint. For the safety of everyone, please do not remove these flags or markings.

2

DIG EXCAVATIONS

Excavations of various sizes will be dug to expose services in front of homes and businesses and on corner lots to assist with installing the new main and making final connections. The corner lot excavations will be large and remain until final connections are made at the end of the project and the old main has been taken out of service.

3

INSTALL NEW WATER MAIN

The crew plans to bore (install) the main underground and under driveways. If necessary, driveways may be impacted and will be restored.

4

RECONNECT SERVICES

Homes and businesses will be reconnected to the new main. This will include a temporary water service interruption. You will be notified in advance of any planned service interruption.

5

ABANDON OLD MAIN AND TAKE OUT OF SERVICE

After water main installation and service reconnection work is completed, the old water main will be abandoned and taken out of service. This will include another temporary water service interruption. You will be notified in advance of any planned interruption.

6

RESTORATION

Restore lawns, landscaping, sidewalks, driveways, and streets at the end of the project and/or as weather permits.

WHY

- Investing in your neighborhood by replacing the water mains in your area.
- Part of M.U.D.'s Infrastructure Replacement Program.

WHEN AND HOW LONG

Work will begin very soon: anticipated Mid-July 2024.
Project duration is several months, barring any unplanned delays.

TRAFFIC

Possible lane restrictions may exist. Parking on the street may be restricted. For the safety of everyone, please slow down when driving in the area.

TO PREPARE FOR A WATER SERVICE INTERRUPTION

To continue using a tank-style toilet, fill a container with water and have a bucket nearby to scoop water into the toilet tank and fill about halfway **for each flush**. A bathtub works great for this.

AFTER A WATER SERVICE INTERRUPTION

It is normal for air to be in the water lines after a water service interruption. Please run your COLD water for about 10 minutes to release the air.

YOUR PROJECT CONTACT
SR. ENGINEERING TECHNICIAN
BRYAN at 402.504.0743



Hydrants are generally in easement or Right of Way (ROW) and may be moved to accommodate the new main location and meet all fire codes.



If you have a physical disability and are worried about accessibility to your home or business, please contact us.

Project questions and concerns may also be directed to:
Tina Gutschenritter 402.504.7770
Feel free to send an email to CustomerSuccessTeam@mudnebr.com

Scan to watch a video on what to expect during
an infrastructure replacement project



SCAN
ME!

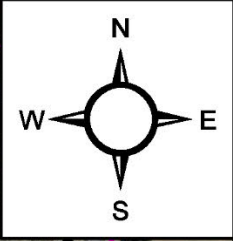
**METROPOLITAN
UTILITIES DISTRICT**

WP2009

CONTRACTOR



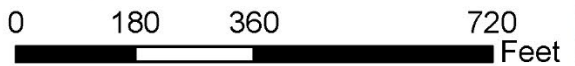
**PROJECT WILL
START HERE
(52ND & SPAULDING)**



**To be installed
under WP2009 CapEx**

**Abandon:
40' +/- of 12" & 4,695' +/- of 6"
CI Water Main**

**Install:
40' +/- of 12", 1,600' +/- of 8", &
3,280' +/- of 6" HDPE Water Main**



WP2009

