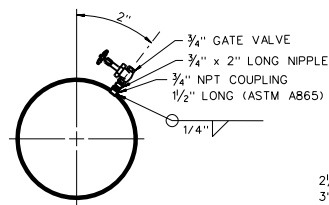
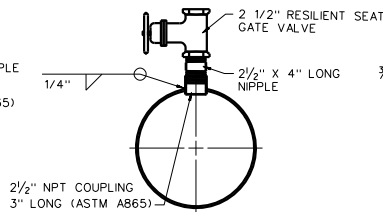


SPEC NO.
MUD 125(MUD119) FIG 1

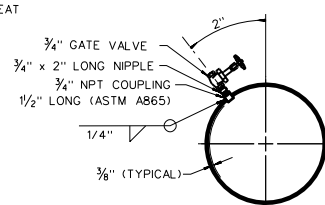
| BILL OF MATERIAL | | | |
|------------------|--|------|-------|
| QUAN. | DESCRIPTION | UNIT | TOTAL |
| 1 | 6" DIA. x 36" LONG UNLINED SCH. 40 STEEL PIPE (ASTM A53) | | |
| 2 | 6" x 20.8" 10 GAUGE SHEET STEEL | | |
| 2 | 3/4" X 1 1/2" LONG NPT NON-RECESSED STEEL COUPLING FOR STD. WT. PIPE (ASTM A865) | | |
| 2 | 2 1/2" X 3" LONG NPT NON-RECESSED STEEL COUPLING FOR STD. WT. PIPE (ASTM A865) | | |
| 1 | 1/2" THK. x 6" DIA. PLATE LOW CARBON STEEL. | | |
| 1 | 1/2" DIA. x 5.5" LONG CARBON STEEL ROD | | |
| 2 | 3/4" THREADED GATE VALVE PER MUD 119 | | |
| 2 | 2 1/2" THREADED RS GATE VALVE PER MUD 122 | | |
| 2 | 3/4" X 2" LONG NIPPLE | | |
| 2 | 2 1/2" X 4" LONG NIPPLE | | |
| 1 | 1/2" x 10" LONG STEEL BAR | | |



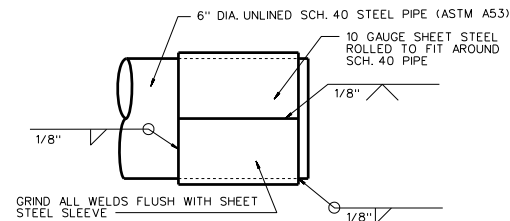
SECTION A-A



SECTION B-B

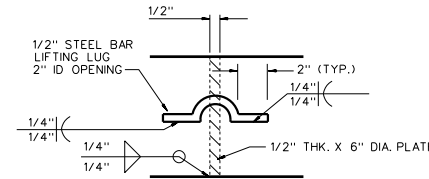


SECTION C-C



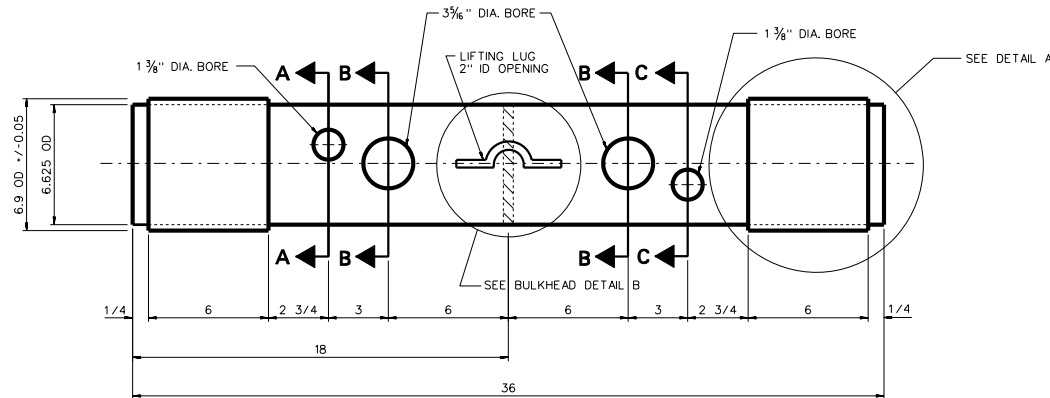
DETAIL A - TYPICAL

No Scale



BULKHEAD DETAIL B - TYPICAL

No Scale



6" CHLORINE TUBE

No Scale

SPECIFICATIONS

1. FABRICATION OF CHLORINE TUBES

THE CHLORINE TUBES SHALL BE FABRICATED ACCORDING TO THESE PLANS AND SPECIFICATIONS. ALL DIMENSIONS SHALL NOT VARY MORE THAN AN 1/8" FROM THOSE SPECIFIED/SHOWN.

ALL DIMENSIONS ARE GIVEN IN INCHES EXCEPT WHERE NOTED.

ALL MATERIALS SHALL BE CLEAN CUT WITHOUT TORN OR RAGGED EDGES.

HOLES SHALL BE CUT, DRILLED OR PUNCHED AT RIGHT ANGLES TO THE SURFACE OF THE METAL.

2. MATERIAL

MATERIALS FOR CONSTRUCTION OF CHLORINE TUBES SHALL BE NEW AND SHALL MEET THE REQUIREMENTS OF THE DRAWINGS AND SPECIFICATIONS AS TO QUALITY, PERFORMANCE, SUITABILITY AND APPEARANCE.

STEEL MEMBERS SHALL BE CUT TO LENGTH BY FLAME CUTTING, SHEARING OR SAWING. MILL WORK MAY NOT BE REQUIRED PROVIDED THAT PROPER SKILL HAS BEEN EXERCISED IN FABRICATION.

3. WELDING

ALL WELDS SHALL BE MADE AS SHOWN AND SHALL BE WATER TIGHT TO 200 PSIG. ALL WELDING SHALL COMPLY WITH STRUCTURAL WELDING CODE-STEEL, ANSI/AWS D1.1. WELDING SHALL BE DONE BY A WELDER QUALIFIED IN ACCORDANCE WITH ANSI/AWS D1.1. EVIDENCE OF CERTIFICATION MAY BE REQUIRED BY M. U. D.

4. COATING

ALL SURFACES SHALL BE COATED (INSIDE AND OUT) EXCEPT VALVES. VALVES SHALL HAVE FACTORY COATING.

SURFACE PREPARATION SHALL BE NEAR WHITE METAL BLAST CLEAN PER SSPC-SP10.

CHLORINE TUBES SHALL BE COATED WITH TNEDEC SERIES 20 POTA-POX, TNEDEC SERIES FC20 POTA-POX (FAST CURE) OR PPG AQUAPON LT SERIES 95-172. THE COLOR SHALL BE WHITE WITH A MINIMUM DFT OF 10.0 TO 14.0 MILS.

5. VALVES

3/4" GATE VALVES SHALL BE PER MUD 119

2 1/2" RESILIENT SEAT GATE VALVES SHALL BE THREADED AND PER MUD 122.

6. INSPECTION

ALL MATERIALS USED AND ALL WORK DONE SHALL AT ALL TIMES BE SUBJECT TO THE INSPECTION, TESTS, AND APPROVAL OF THE UTILITIES DISTRICT AND ITS AUTHORIZED REPRESENTATIVES.

ANY SUCH INSPECTION, TESTS, OR APPROVAL OF WAIVER OF TESTS SHALL NOT IN ANY WAY RELIEVE THE CONTRACTOR OF FULL RESPONSIBILITY FOR FURNISHING APPARATUS, EQUIPMENT, AND MATERIALS MEETING THE GUARANTEED PERFORMANCE AND REQUIREMENTS OF THE SPECIFICATIONS.

THE SUPPLIER SHALL FURNISH SAMPLES FOR TESTING PURPOSES OF ANY MATERIAL IF REQUIRED BY THE ENGINEER, AND SHALL FURNISH ANY INFORMATION REQUIRED CONCERNING THE NATURE OR SOURCE OF ANY MATERIAL USED.

6" CHLORINE TUBE FOR CONTRACTED PROJECTS

ENGINEERING DATA

| DRAWN BY | LUL | DATE |
|----------------------|-----|----------|
| REVISED BY | MMH | 2-28-87 |
| CHK. BY ENGR. | | 10-22-90 |
| CHK. BY CORNL. ENGR. | | |
| CHK. BY SR. ENGR. | | |
| APP. SUPR. ENGR. | | |