

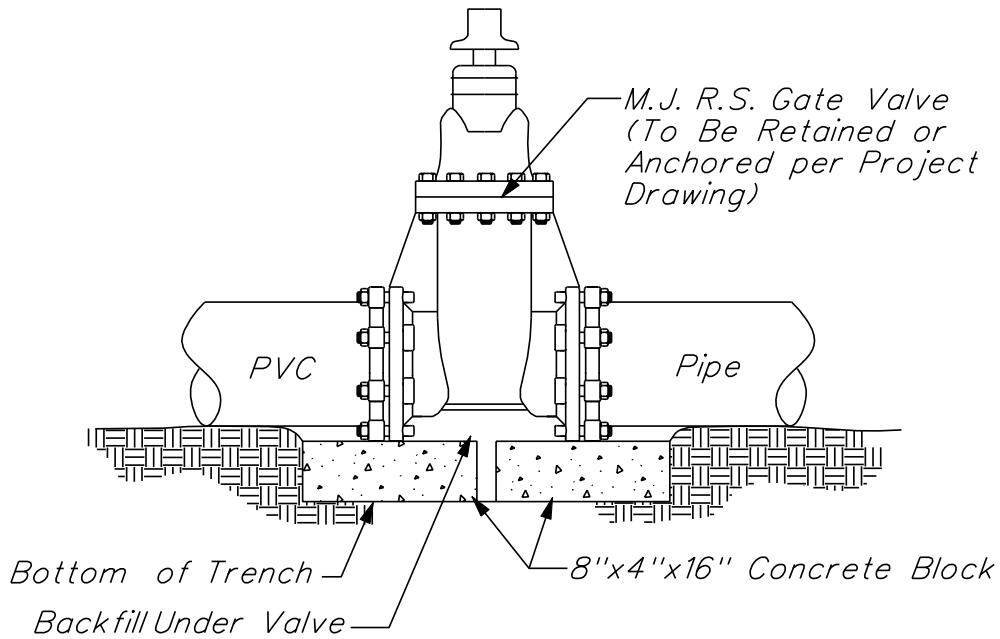
METROPOLITAN UTILITIES DISTRICT

No. 2.2.0
Page: 1 of 1
Effective: 1-22-08
Prepared by: JAZ
Approved by: JGL

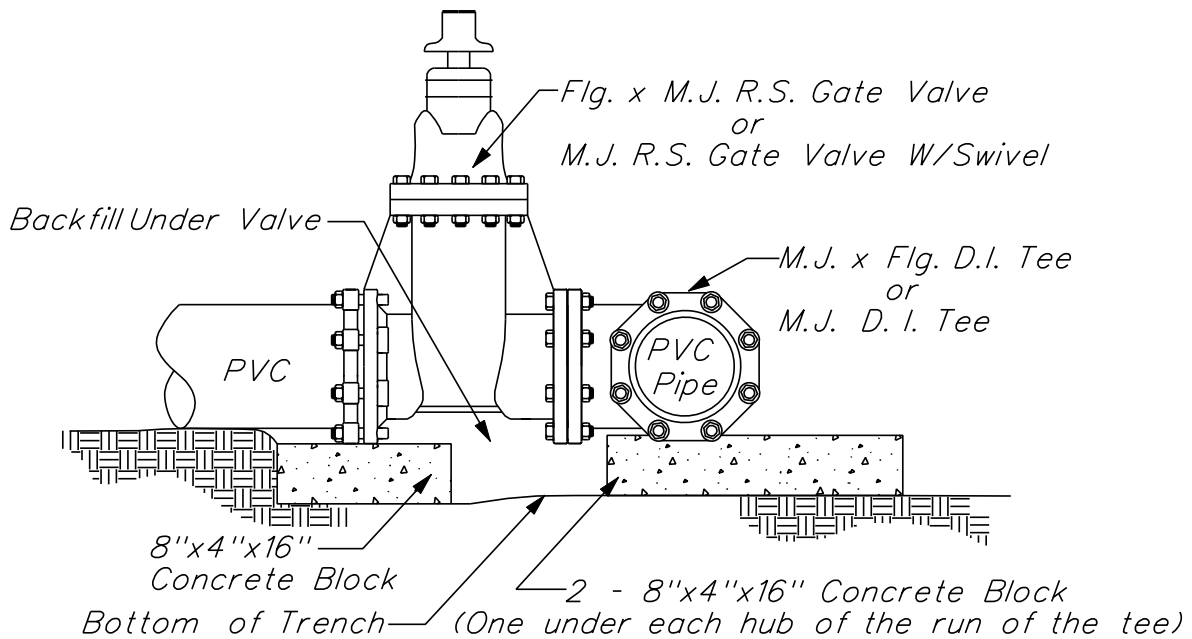
CONSTRUCTION STANDARD FOR: Gate Valve Installation on 16" and Smaller PVC Water Mains *

Supersedes: 2-1-06

**



TYPICAL IN-LINE VALVE
No Scale



TYPICAL VALVE OFF BRANCH OF TEE
No Scale

* Revised Title
** Revised Drawing